

Configuring Drivers: Introduction

What is a driver?

A driver is a special file that lets the computer communicate to peripheral devices such as printers, pole displays and portable data terminals. Drivers contain instructions on how data is to be transmitted.

Where can I find the drivers I need to use with XpertMart?

We write all of our own drivers. Do not install any drivers you may find that come from the manufacturer of the peripheral device (such as on an install CD or downloadable from their website). This will prevent XpertMart from functioning properly.

All of the drivers XpertMart uses are found in the /Main/Drivers directory. You will recognize these files because they all end in the .class extension. For example, StandardMacInvoice.class is a driver that tells the receipt printer how to print your Invoices.

How do I configure XpertMart to use the right drivers?

The rest of this document will explain how to configure XpertMart to use our standard drivers for the Macintosh platform.

The document covers 4 areas: 1) how to configure the drivers you need to print Documents such as Invoices, Returns and Receipts; 2) how to configure the drivers you need to print barcodes; 3) how to configure the drivers you need to use a Portable Data Terminal; and finally, how to configure the drivers you need to use a Pole Display.

Can I make my own drivers?

No.

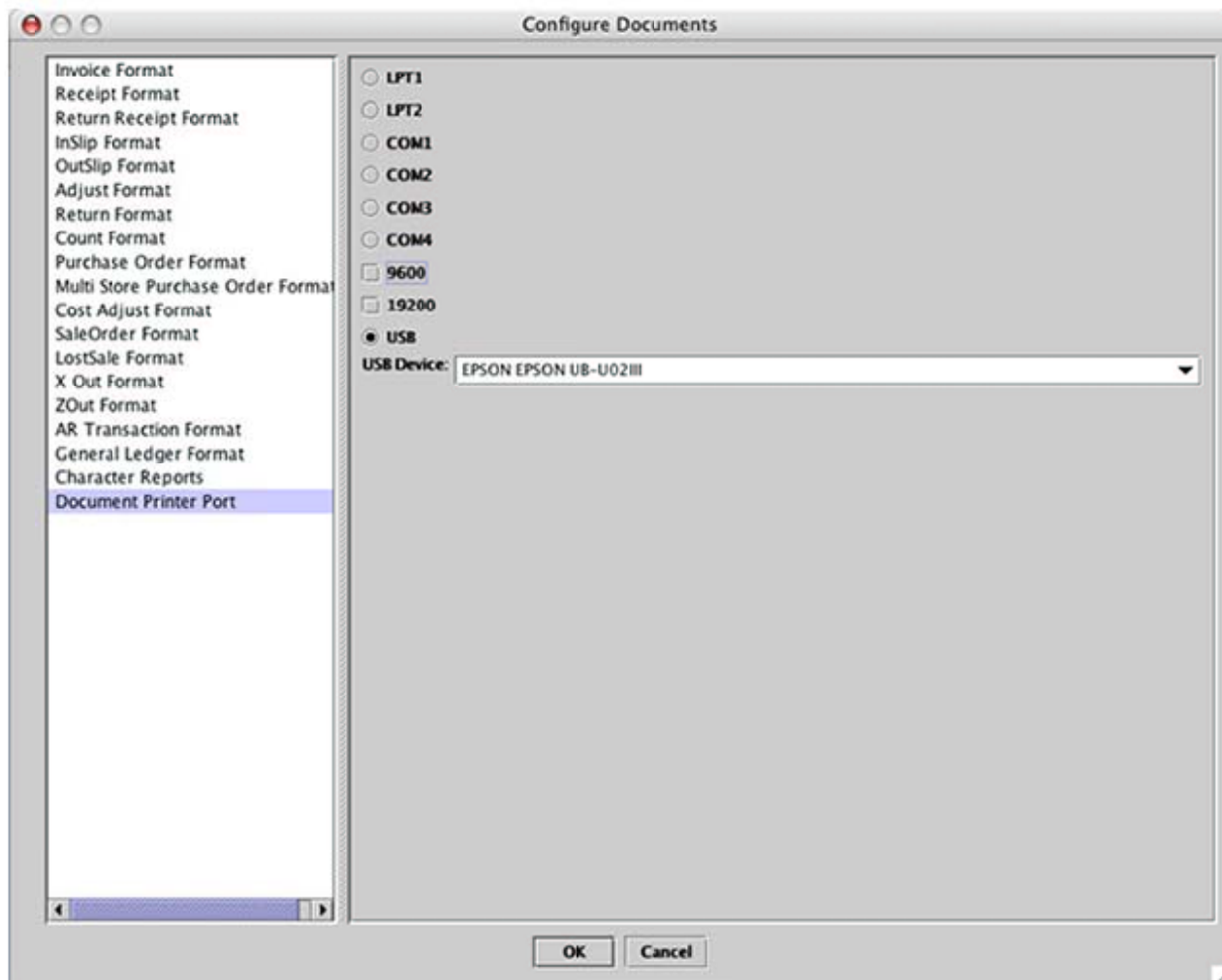
What if I want to make changes to a driver?

Customers with a full tech support contract can request customized drivers. Special charges may apply for customers who do not have a full tech support contract.

Configuring Drivers: Document Formats

1) Go to Configure>Configure Documents. This is where you setup the printing formats you want to use for the different transactions or documents you make.

2) On the left-side menu, click on Document Printer Port. This is where you tell the computer where to print documents.

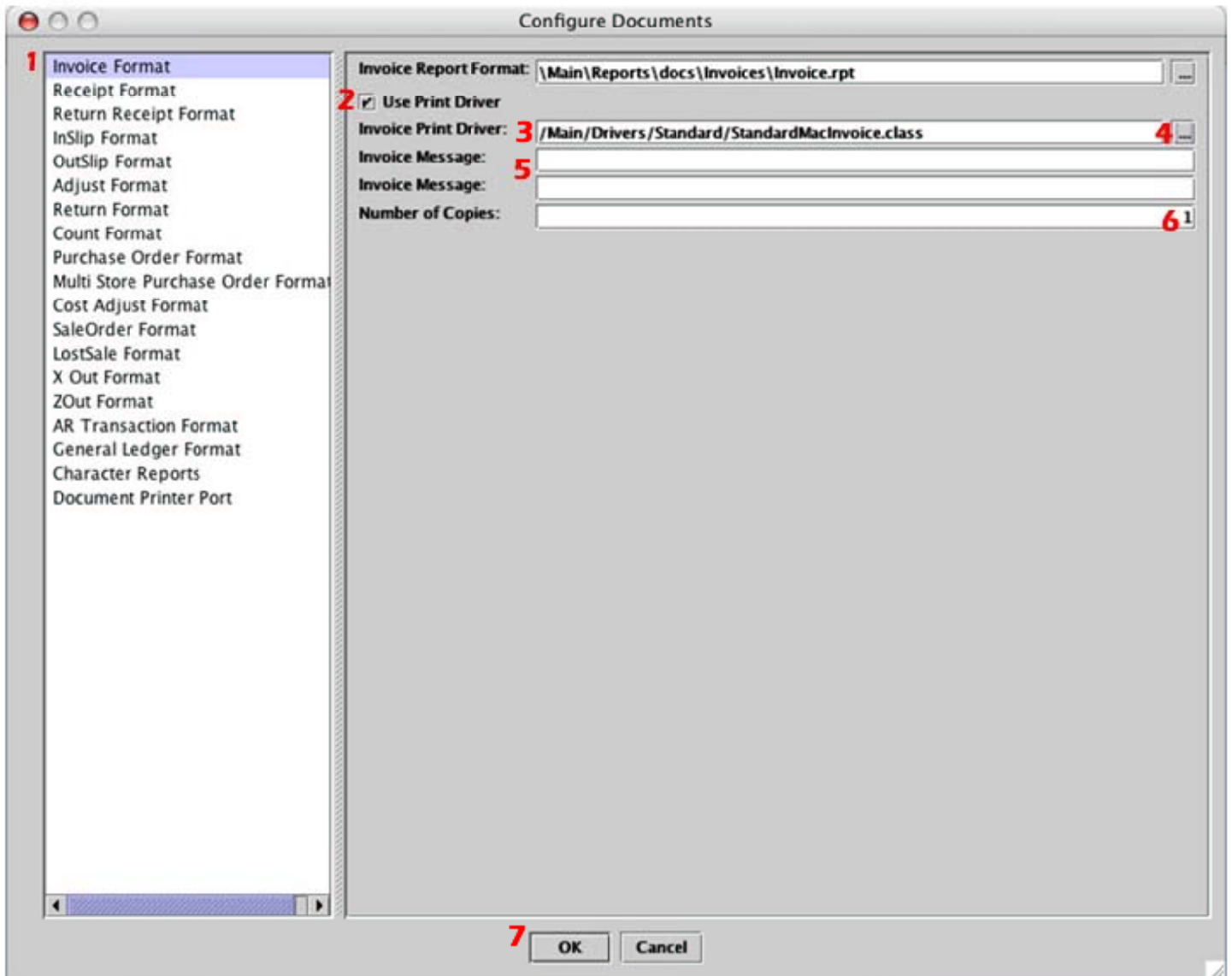


3) Click on USB. Make sure the POS printer is plugged into the USB port. Select the printer you want to use from the USB Device drop-down menu. If you don't see your printer it means the computer is not detecting it is there. Turn the printer off and close XpertMart. Turn the printer back on and then open XpertMart and return to this menu. The printer should now appear.

NOTE: The printer must be plugged directly into the USB port (no hubs). You can only use one printer at a time (do not try plugging the POS printer and the label printer to one computer at the same time).

4) Now you need to set the configuration for each Document type found on the left-side menu, starting with Invoice Format. (See next page).

Configuring Drivers: Invoice Format



1) Left-side menu shows you what format you are configuring, in this case the Invoice Format.

2) If you check the Use Print Driver box, you are telling the computer you will print Invoices to the POS receipt printer and will therefore need to select a print driver.

3) The Invoice Print Driver contains the format of how Invoices will be printed. The standard configuration is shown.

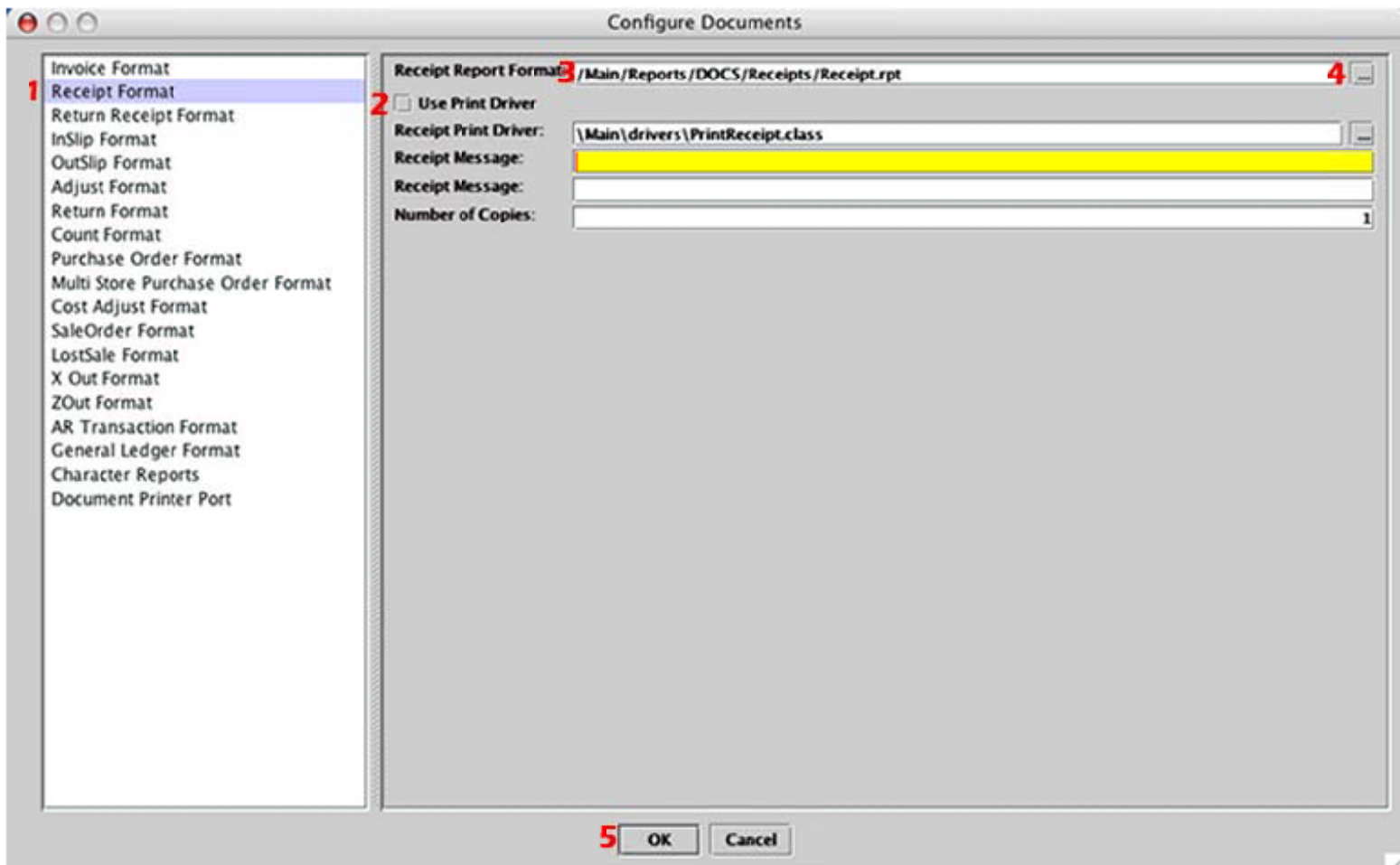
4) To select a different driver, click on the Browse button and find the driver you wish to use.

5) You have 2 optional message fields. Anything you type here appears at the bottom of the Invoice.

6) Select the number of copies that print out when you press F12 in the Invoicing screen.

7) Click OK to save changes. Any change to configuration such as this one does not take effect until you close XpertMart and enter again.

Configuring Drivers: Receipt Format



1) Left-side menu shows you are configuring the Receipt Format.

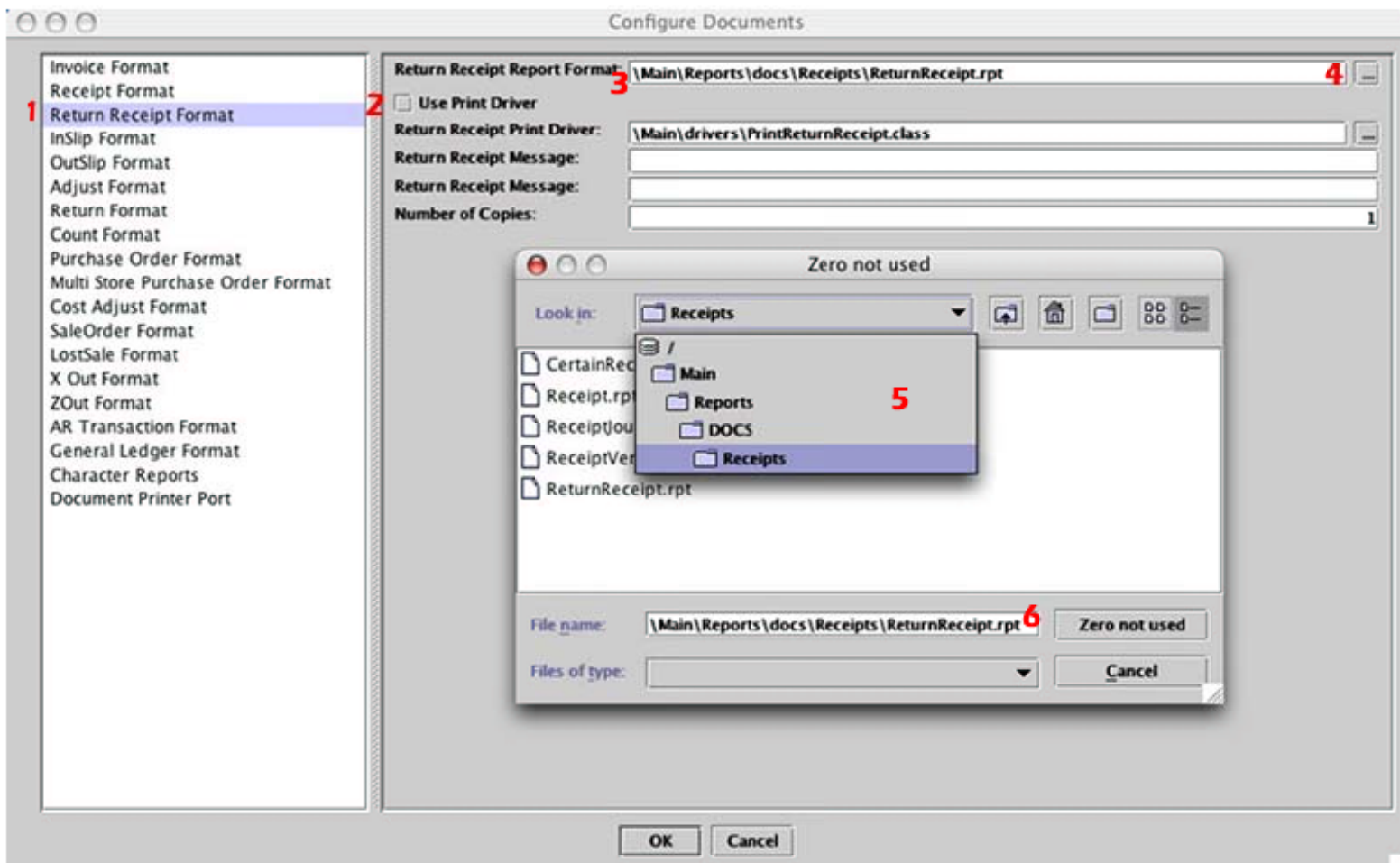
2) Since the Use Print Driver box is not checked, you are telling the computer you will be printing Receipts to the default 8.5" x 11" printer. You will therefore need to select a report format to use.

3) The Receipt Report Format contains the format of how Receipts will be printed on the 8.5" x 11" printer. The standard configuration is shown. Notice report formats end in .rpt and not .class.

4) Click on the Browse button if you want to use a different report format.

5) Click OK to save changes. Receipts will be sent to print to the default printer you've setup in the Operating System.

Configuring Drivers: Return Receipt Format



1) Left-side menu shows you are configuring the Return Receipt Format.

2) Since the Use Print Driver box is not checked, you are telling the computer you will be printing Return Receipts to the default 8.5" x 11" printer.

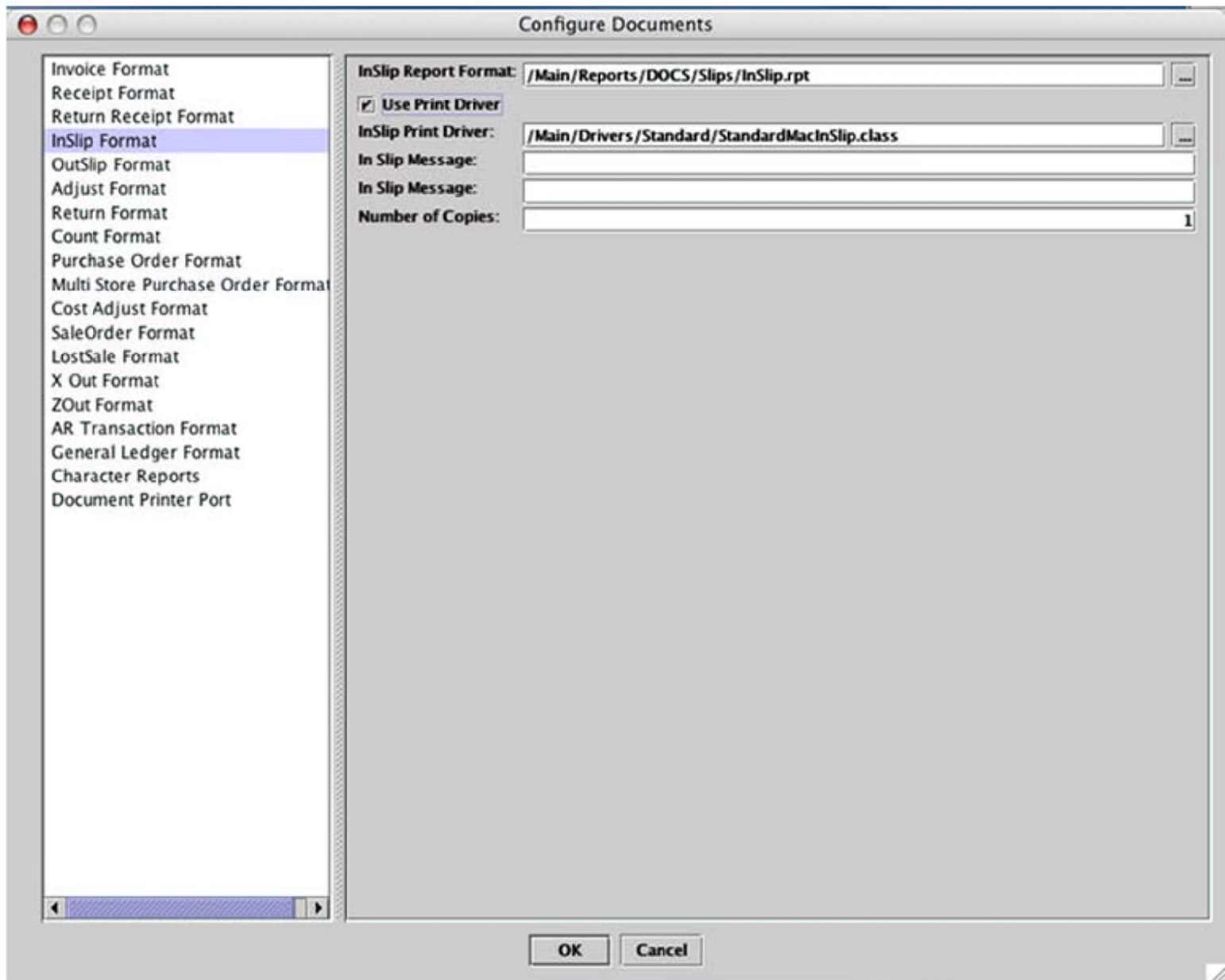
3) The standard configuration for Return Receipts is shown.

4) In this example, the user has clicked on the Browse button to select a Return Receipt format.

5) Clicking on "Look In" the user has chosen the Main folder found on the hard drive ("/"). Under Main the user has selected the Reports subfolder followed by the DOCS and Receipts subfolder. The window displays the contents of this directory: /Main/Reports/DOCS/Receipts.

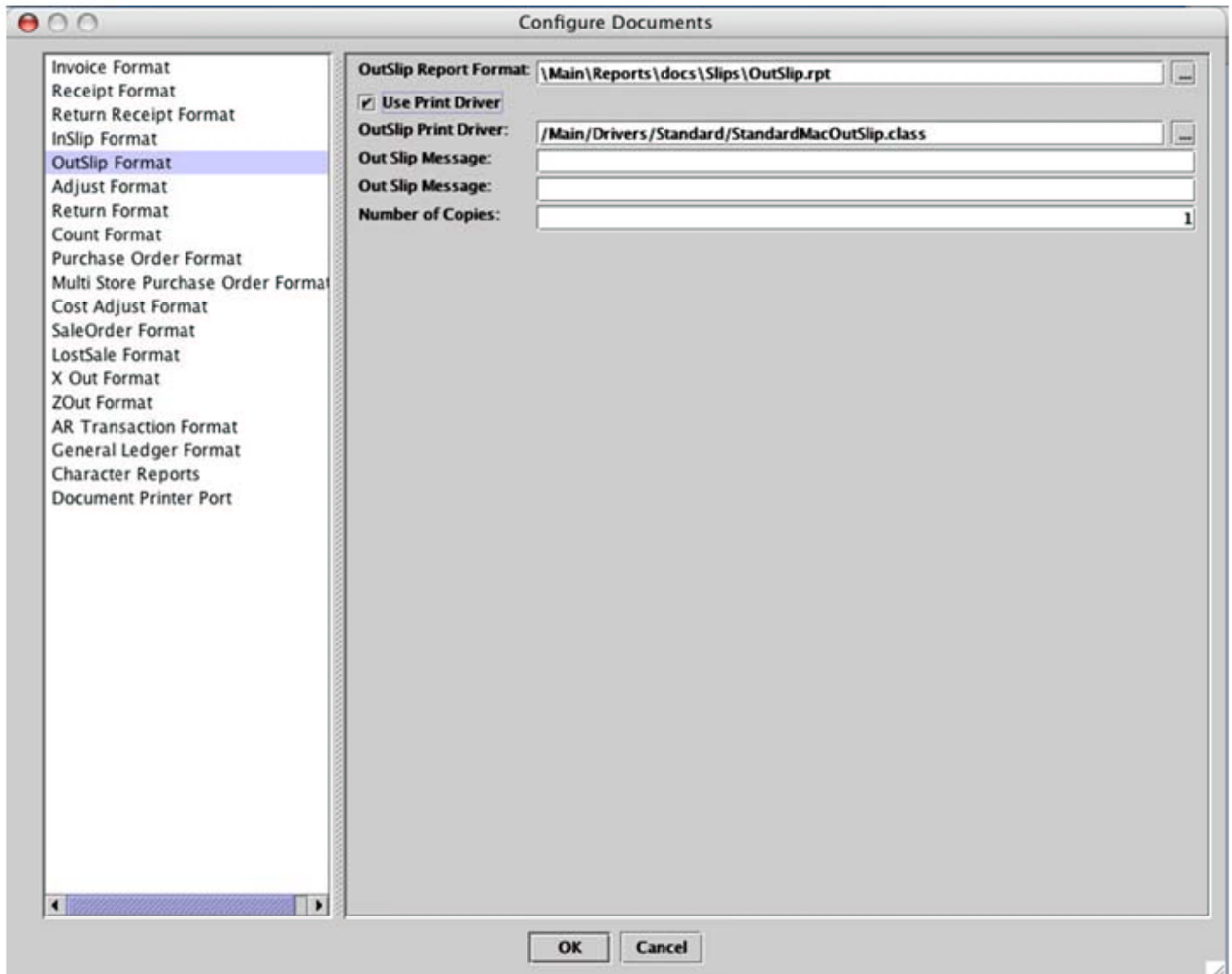
6) The user then selected ReturnReceipt.rpt as the format to use. After clicking OK, the format will appear in the Return Receipt Format field.

Configuring Drivers: In Slip Format



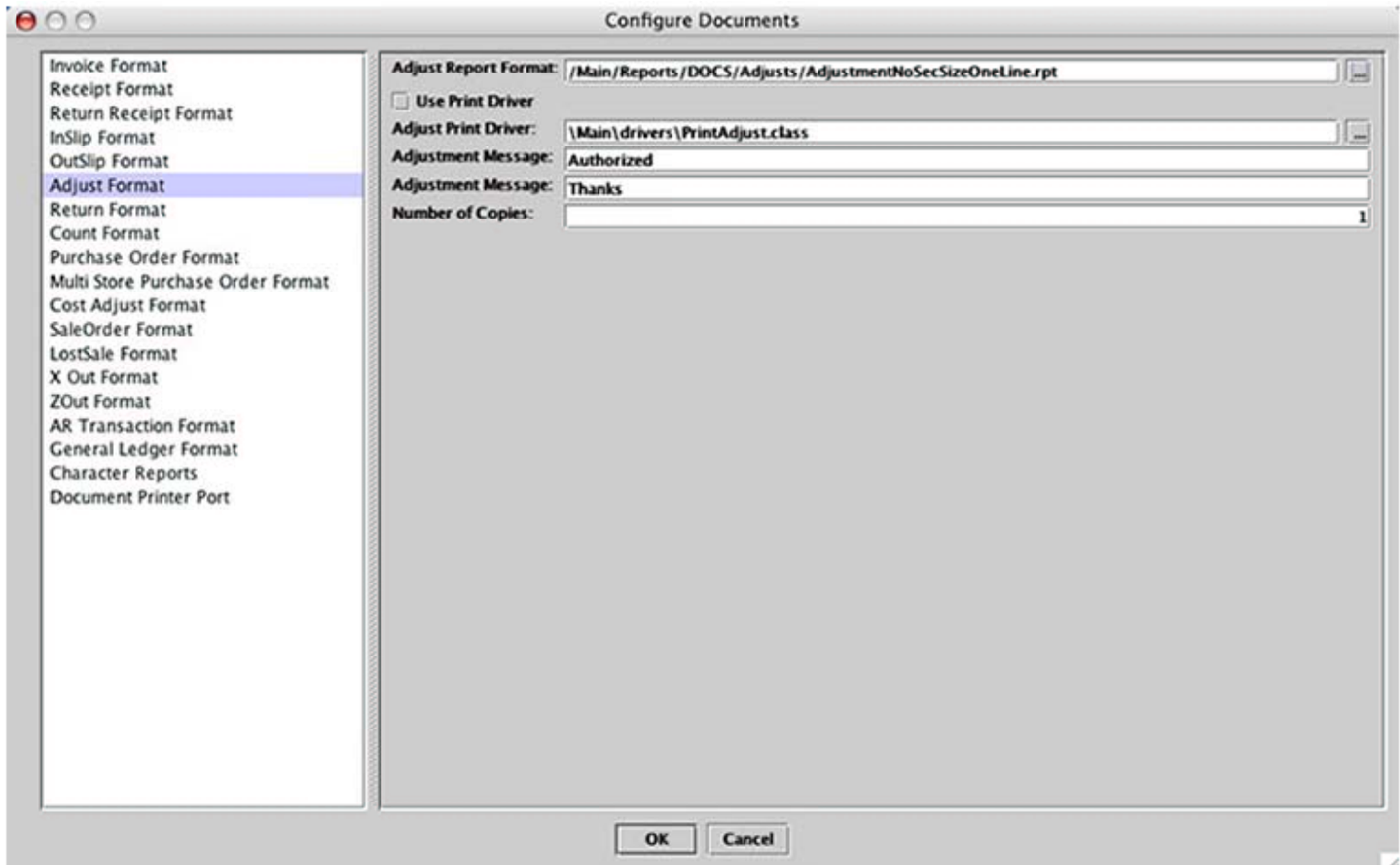
The standard configuration for In Slips is shown. A Print Driver is being used since most stores will have a POS receipt printer but may not have a laser or inkjet printer.

Configuring Drivers: Out Slip Format



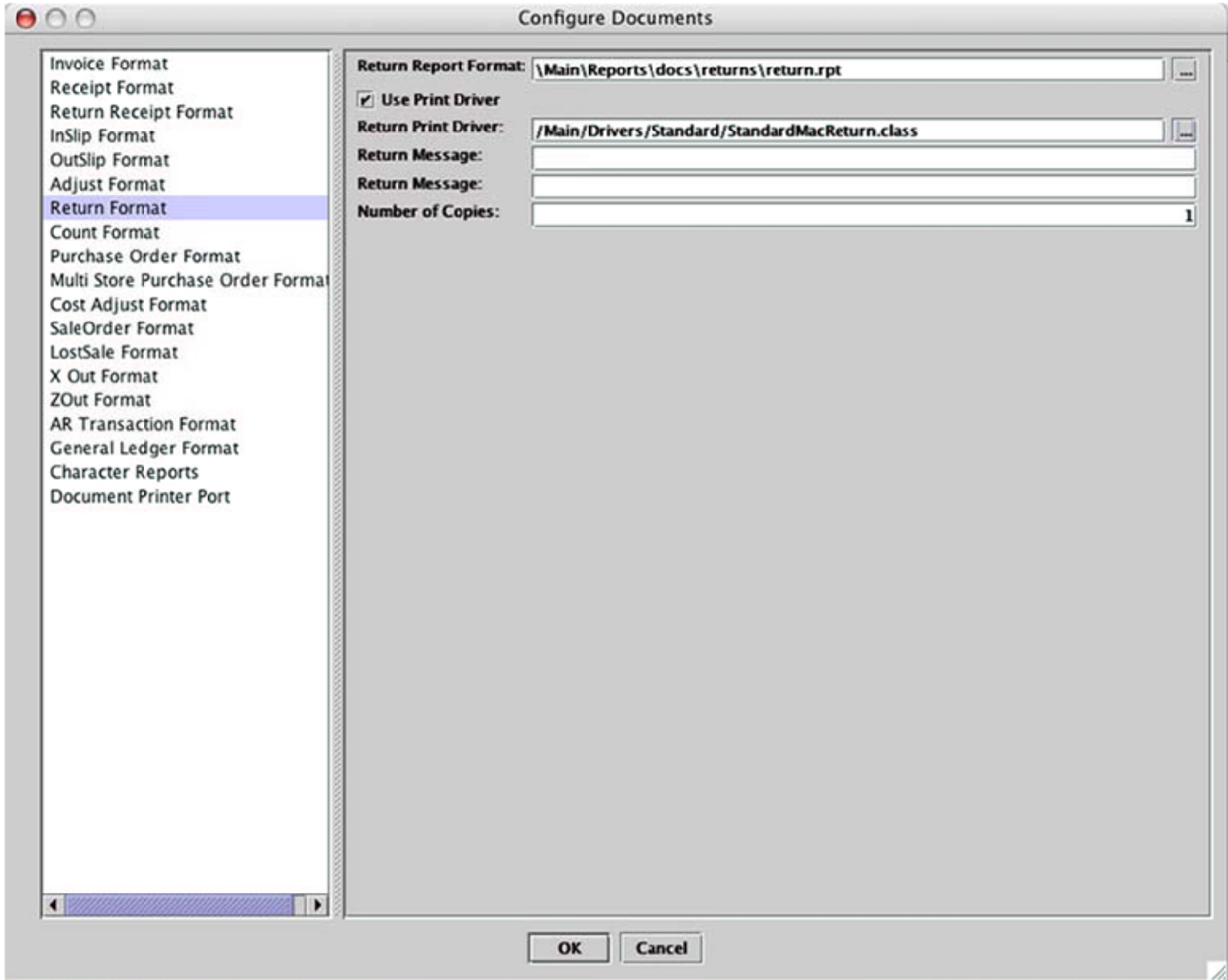
The standard configuration for Out Slips is shown.

Configuring Drivers: Adjustment Format



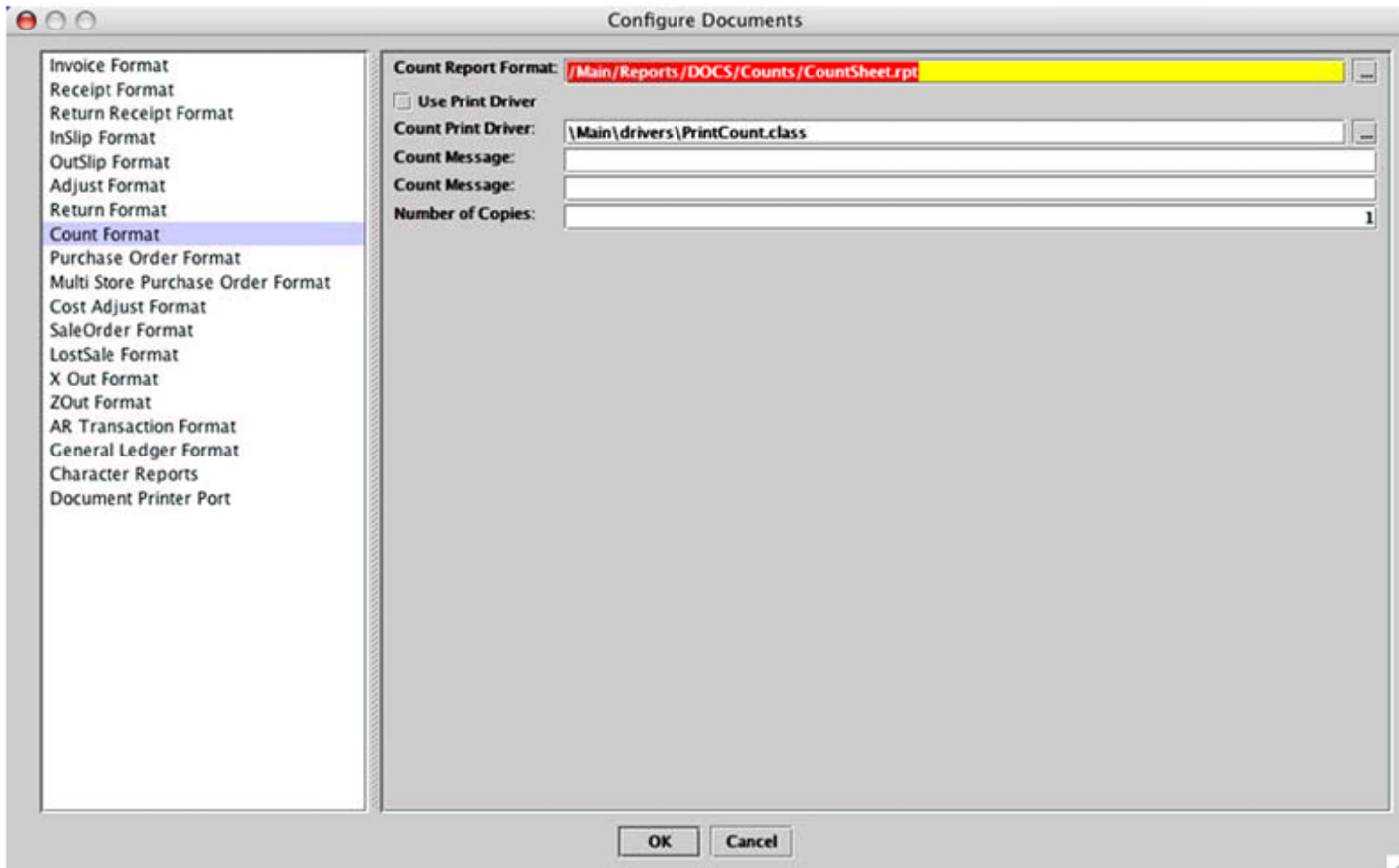
The standard configuration for Adjustments is shown.

Configuring Drivers: Return Format



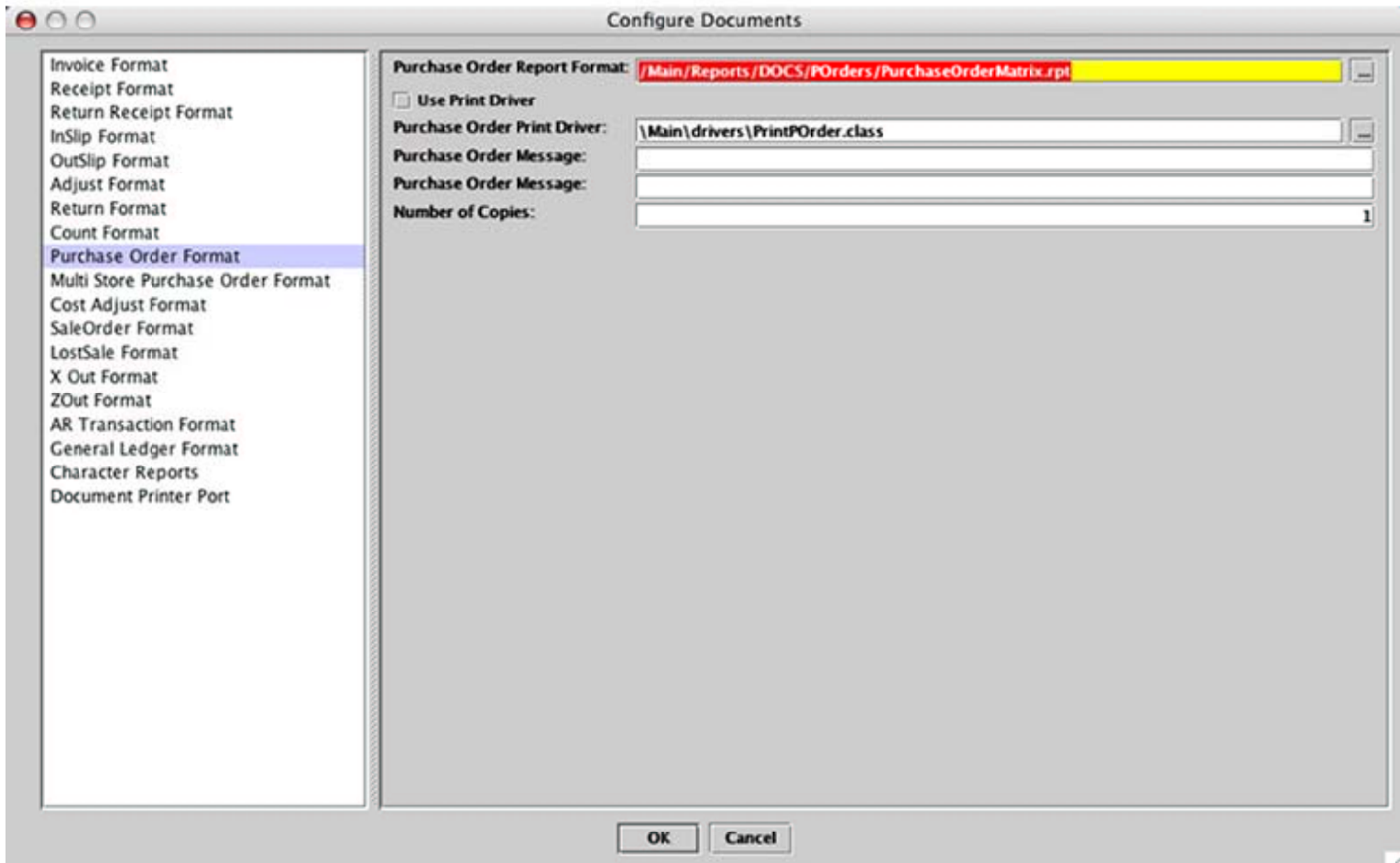
The standard configuration for Returns is shown.

Configuring Drivers: Count Format



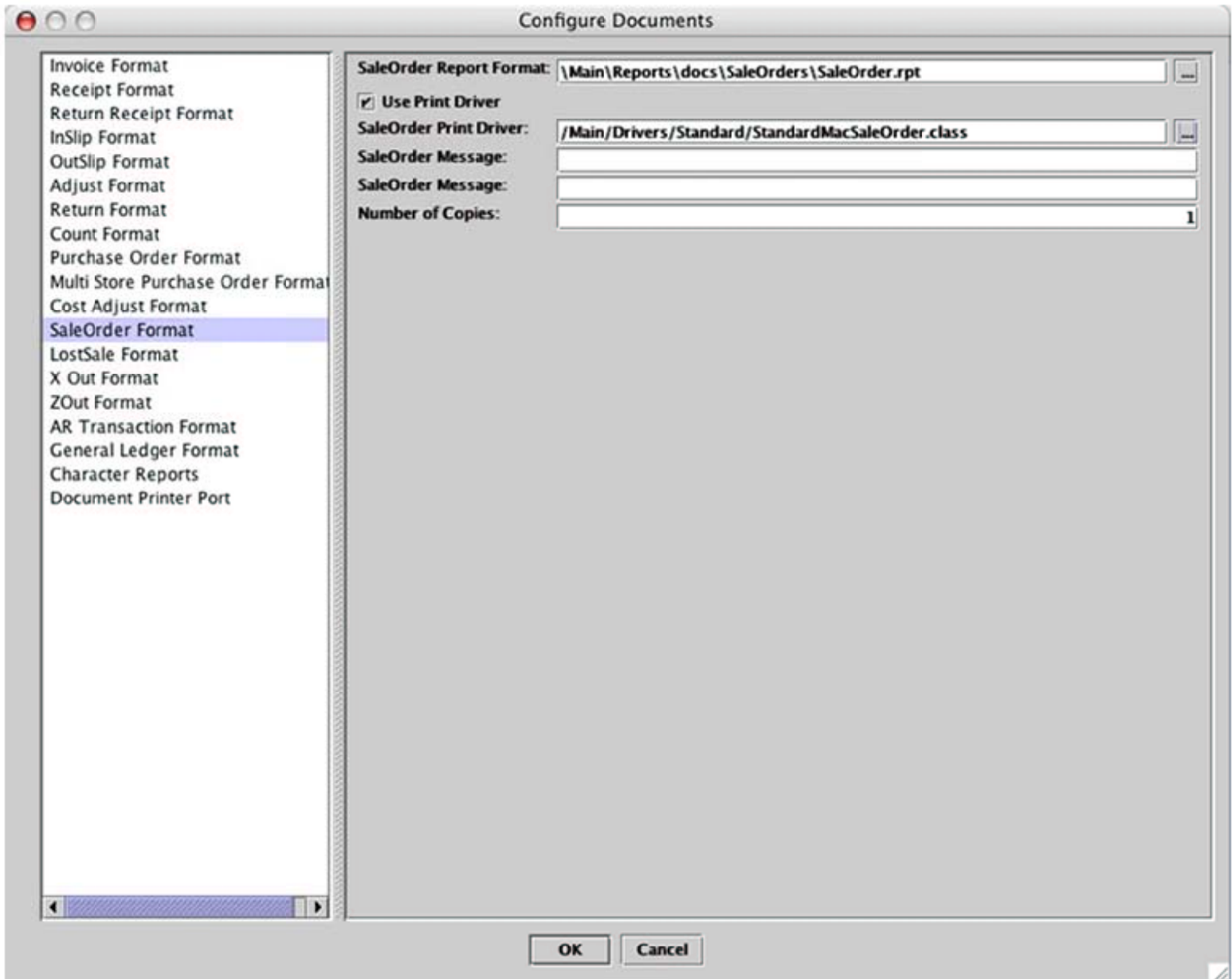
The standard configuration for Counts is shown.

Configuring Drivers: Purchase Order Format



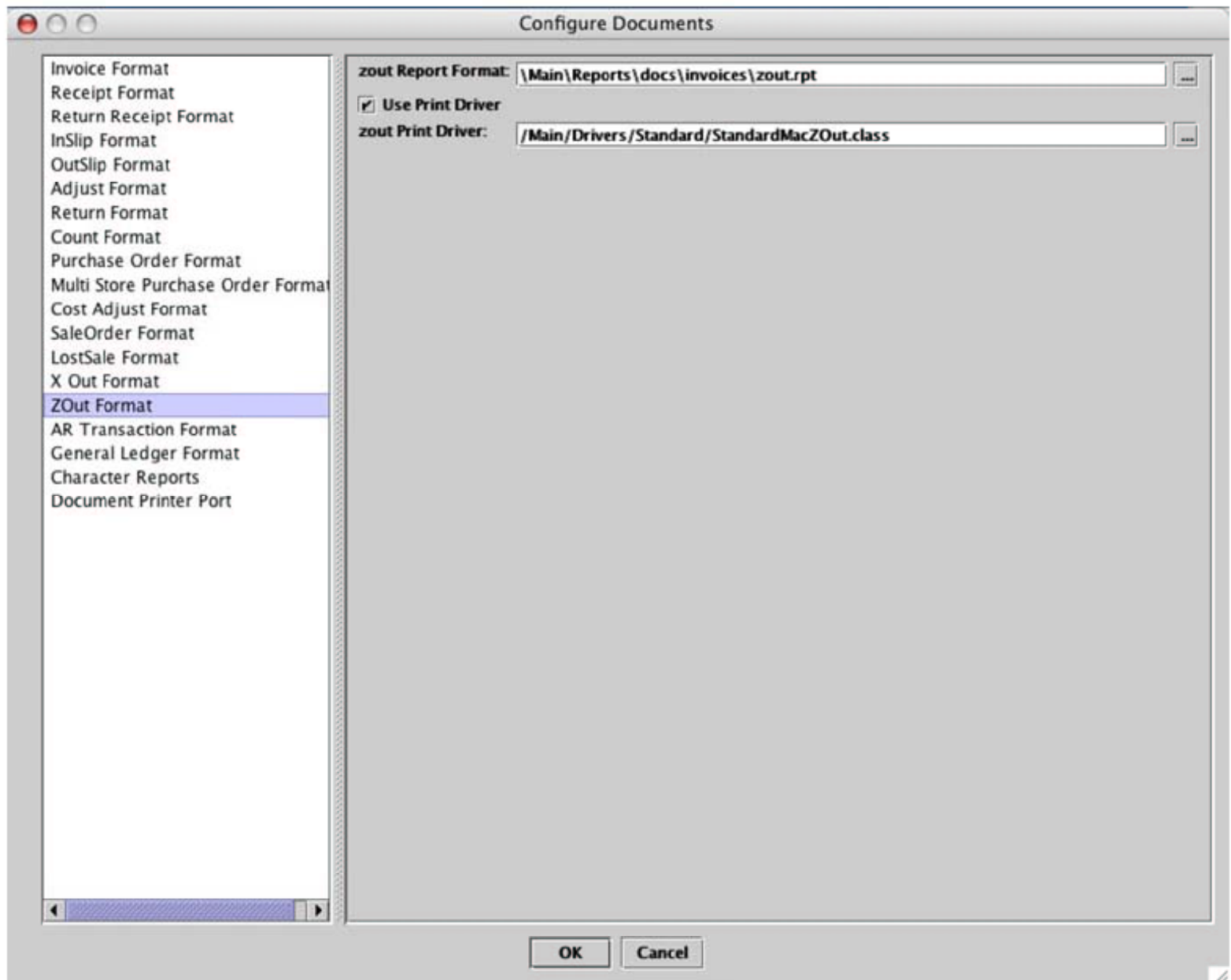
The standard configuration for Purchase Orders is shown.

Configuring Drivers: Sale Order Format



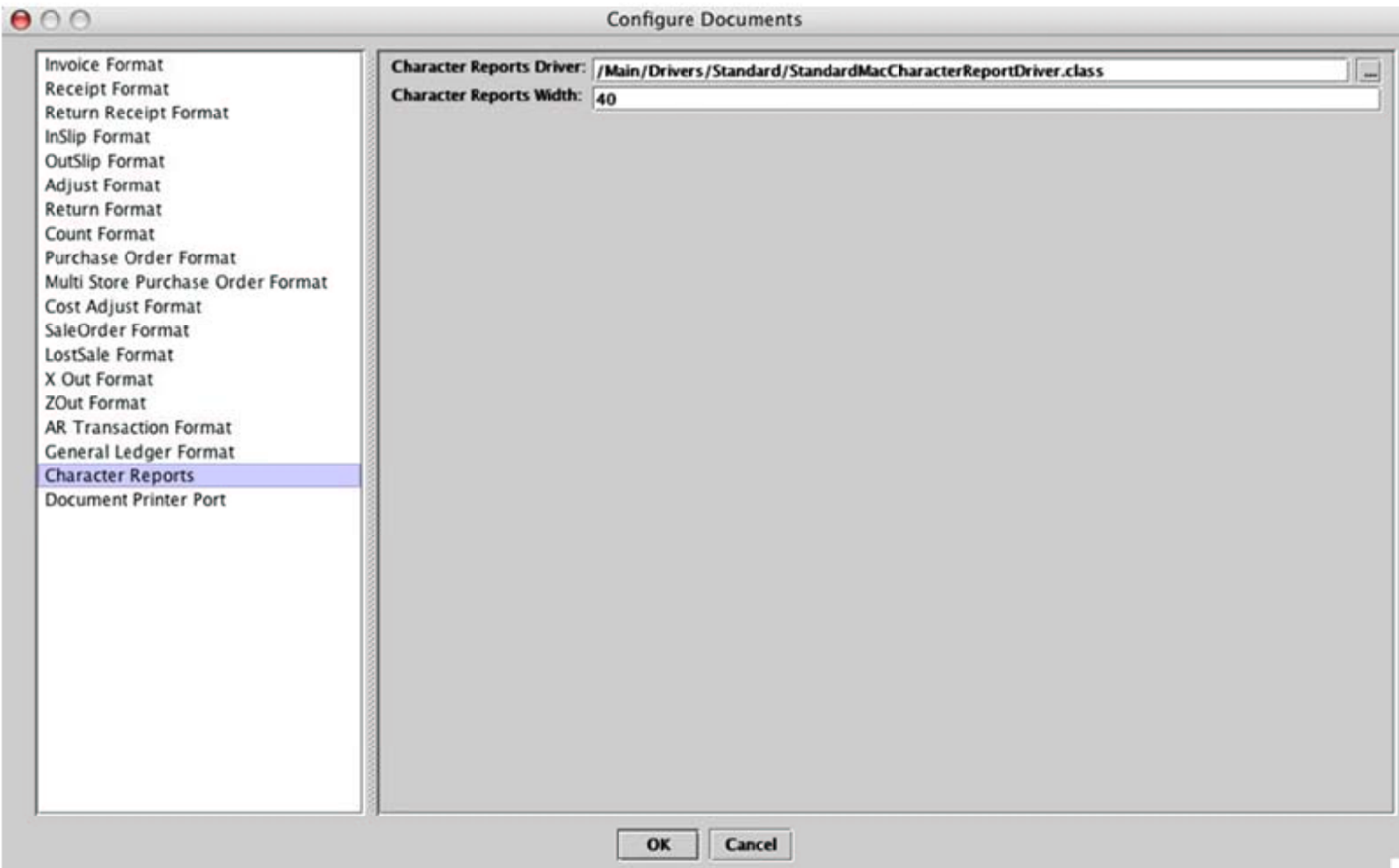
The standard configuration for Sale Orders is shown.

Configuring Drivers: Z-Out Format



The standard configuration for the Z-Out is shown. If you use a print driver the Z-Out will print on the POS receipt printer when you go to Processes>Do Daily Z-Out.

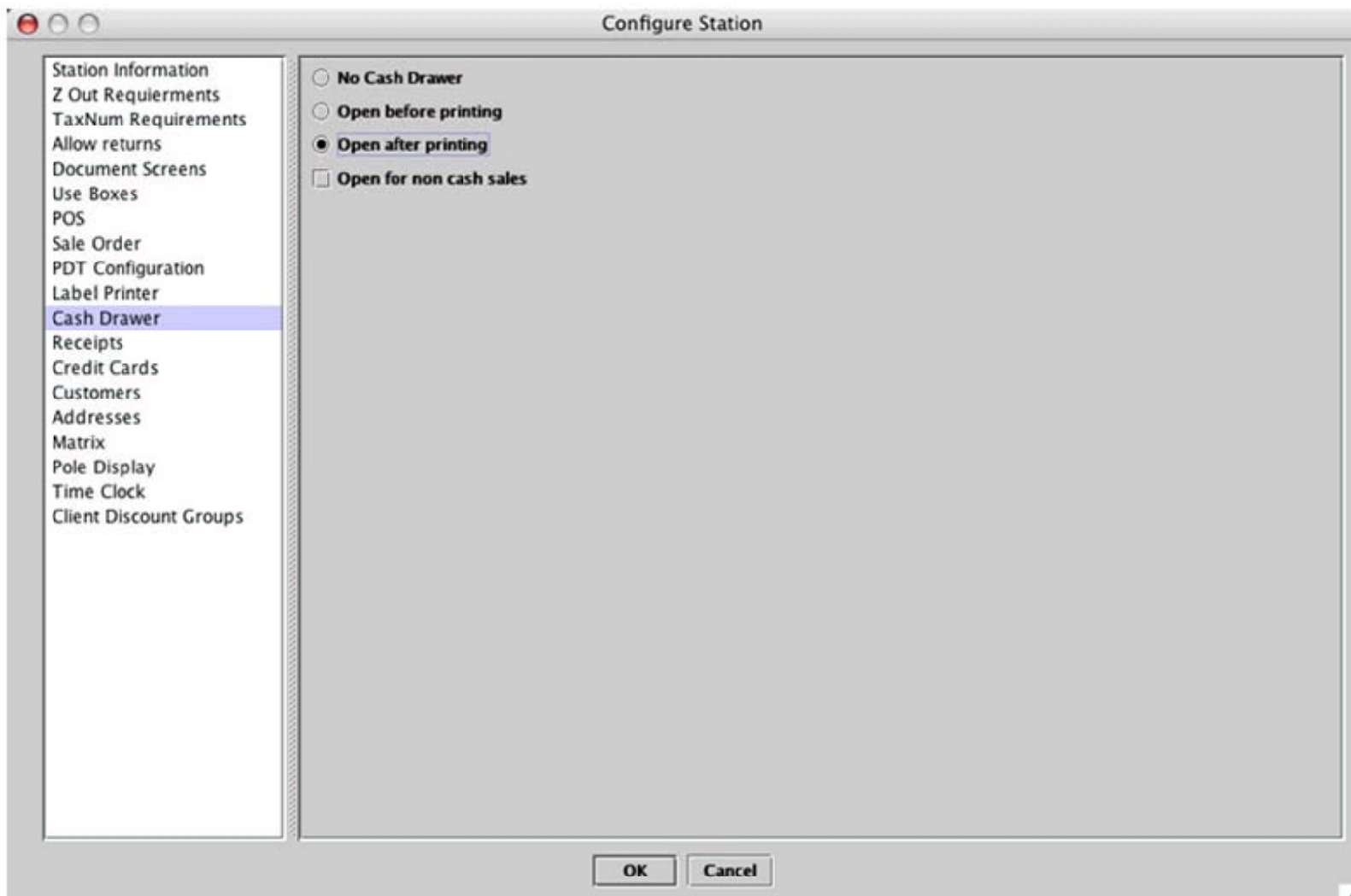
Configuring Drivers: Character Reports Configuration



The Character Reports driver is used to print certain XpertMart reports (those that have the word Character in the title) to a POS receipt printer. The Character Reports Driver converts formatting information so that it can be interpreted and used by the POS receipt printer.

The standard Character Reports Driver configuration is shown.

Configuring Drivers: Cash Drawer Setup



To setup your cash drawer, follow these steps:

- 1) Plug the cash drawer into the POS receipt printer. Make sure you are using the correct cable.
- 2) Go to Station Configure>Cash Drawer. The standard configuration is shown above.

Configuring Drivers: Pole Display Setup

The screenshot shows a window titled "Configure Station" with a sidebar on the left containing a list of configuration categories. The "Pole Display" category is selected and highlighted. The main area contains the following settings:

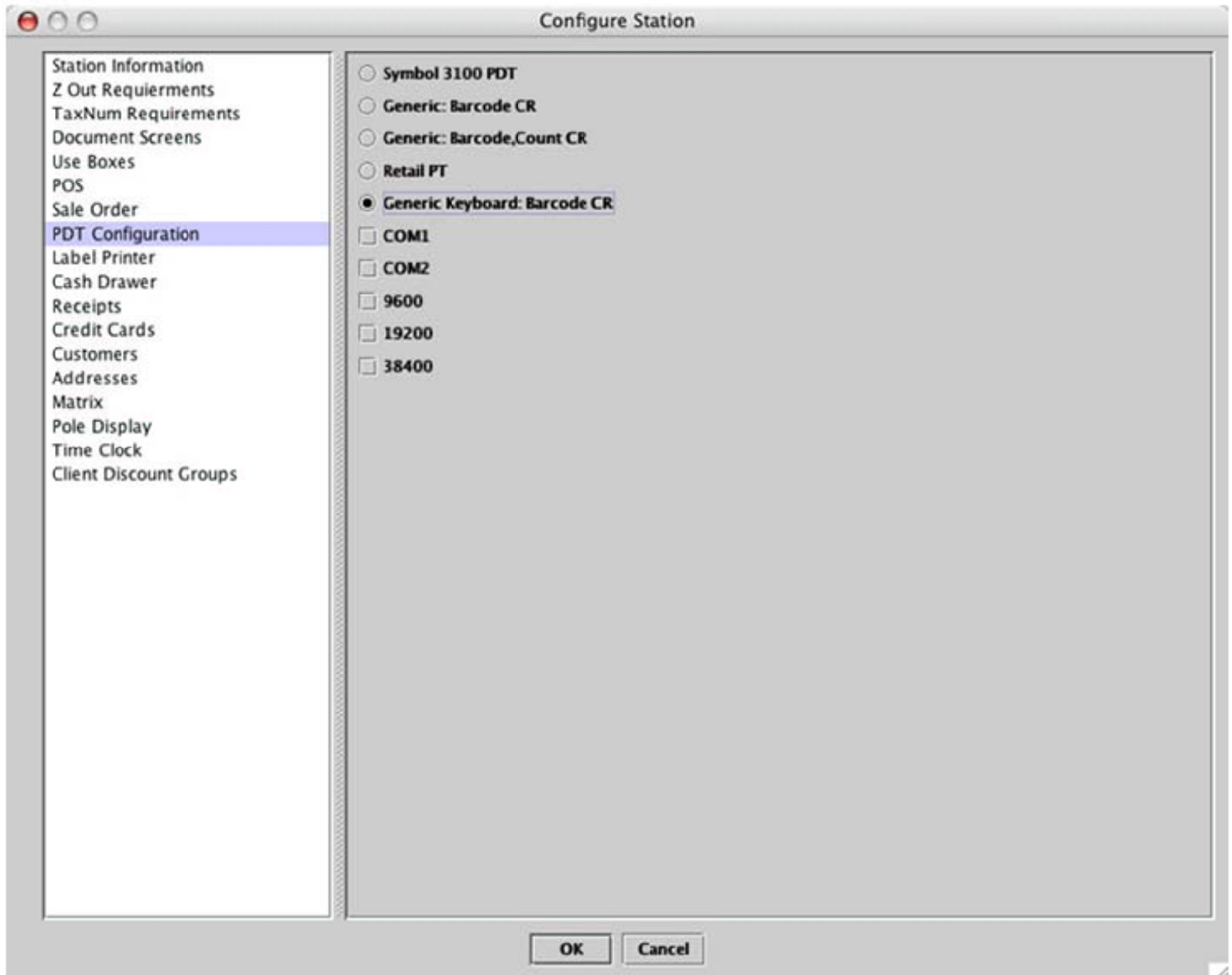
- Use a Pole Display
- Number of lines on Pole Display:
- Number of characters on Pole Display:
- Display Department and Style
- Display Brand and Style
- Scroll message when invoice screen open
- Scroll Text:
- Pole Display Driver:
- USB
- USB Device:

At the bottom of the window are "OK" and "Cancel" buttons.

To setup your pole display, follow these steps:

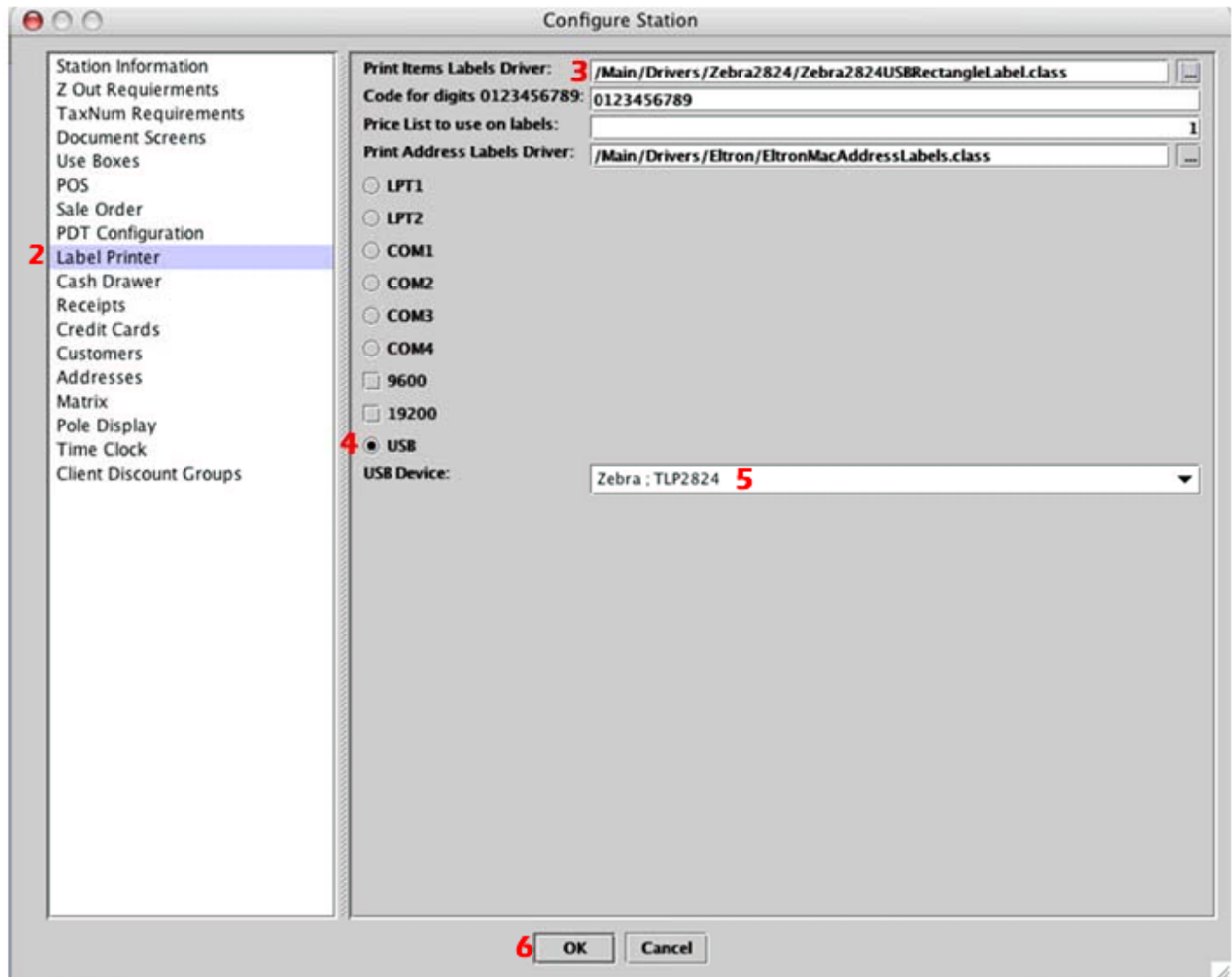
- 1) Plug the pole display into a USB port.
- 2) Go to Station Configure>Pole Display. The standard configuration is shown above.
- 3) Enter your own message to be displayed in the Scroll Text field.

Configuring Drivers: Portable Data Terminal Setup



The standard configuration for using a Portable Data Terminal is shown. Refer to the XpertMart Tricoder User Manual for more information.

Configuring Drivers: Barcode Printer Setup



To setup your barcode label printer, follow these steps:

- 1) Plug the barcode printer into a USB port. Do not use a hub, it must plug directly into a USB port. If you are using a POS receipt printer, you must unplug it first. You can only have one of the two plugged in at a time.
- 2) Go to Station Configure>Label Printer. The standard configuration is shown above.
- 3) Select the label format you want to use. The driver you choose will depend on the kind of printer you are using and the kind of barcode label you are printing on. (See table on next page).
- 4) Check USB as the port the printer is on.
- 5) If you do not see the Zebra printer in the drop-down menu close XpertMart, turn the printer off/on and open XpertMart again.
- 6) Click OK to save the configuration. NOTE: when switching from one format to another you will need to close XpertMart and relaunch. You may also need to do a printer self-test to realign the printer to the new label dimensions. (See "Printer Troubleshooting" document for more details).

Configuring Drivers: Barcode Printer Formats

Zebra 2844 Printer Mac Drivers

Zebra Part #	Dimensions W x L	Type	Driver
800512-105	1.25" x 1"	Label	Drivers/Eltron/EltronMacLabels2.class
800999-007	1.20" x 0.85"	Label	
800999-005	1.25" x 2.25"	Tag	Drivers/Eltron/EltronStoreSingleTallBrandPriceUSBLabel.class
800999-009	2.25" x 1.37"	Tag	
800999-006	2.20" x 0.50"	Butterfly	Drivers/Standard/StandardMacJewelryLabelsBarCode.class
800522-125	2.25" x 1.25"	Label	Drivers/TuneTown/TuneTownLabelsOne.class

Zebra 2824 Printer Mac Drivers

Zebra Part #	Dimensions W x L	Type	Driver
800512-105	1.25" x 1"	Label	Drivers/Zebra2824/Zebra2824USBSquareLabel.class
800999-007	1.20" x 0.85"	Label	
800999-005	1.25" x 2.25"	Tag	Drivers/Zebra2824/Zebra2824SingleTallBrandPriceUSBLabelA.class
800999-009	2.25" x 1.37"	Tag	
800999-006	2.20" x 0.50"	Butterfly	Drivers/Zebra2824/Zebra2824USBJewelryPDCColorLabel.class
800522-125	2.25" x 1.25"	Label	Drivers/Zebra2824/Zebra2824USBRectangleLabel.class